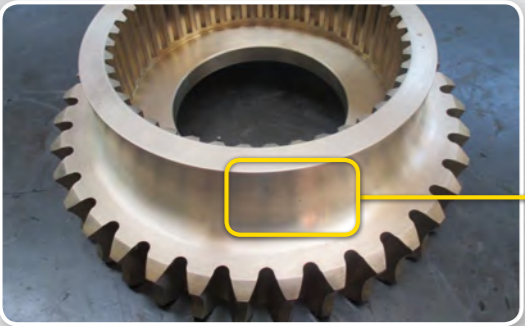



1 EURORICAMBI carries out thread grinding after heat treatment, chamfering the thread tip. This prevents dents and grants quieter running.

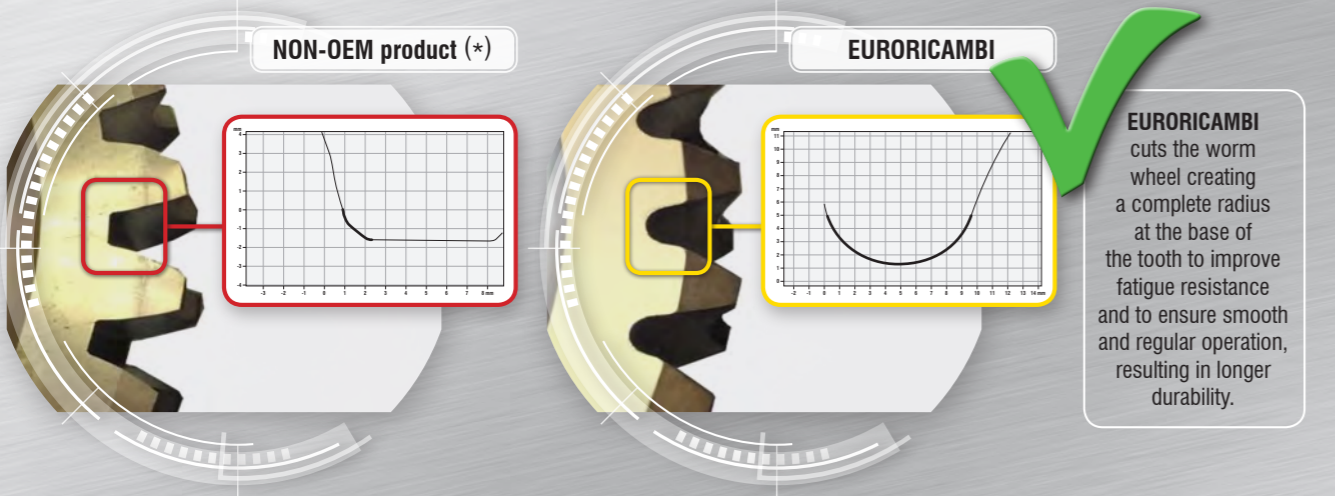
2 On NON-OEM products (*) the thread is ground before heat treatment. This does not eliminate heat treatment distortions and causes noise and vibrations during operation.

3 EURORICAMBI grinds the thread to DIN 7 quality. This type of machining operation eliminates distortion due to heat treatment and achieves excellent eccentricity, resulting in quieter and more regular operation (no vibrations). In addition, a smooth motion transmission ensures longer life to the mating crown wheel.



EURORICAMBI production uses a SAE bronze alloy and it is based on forging technology, while NON-OEM product (*) is carried out from extruded bar or casting. Forged material is always stronger than the casted or bar-cut version.

Hardness Brinner HB 10/3000	
EURORICAMBI	236 ÷ 240 
NON-OEM product (*)	116



EURORICAMBI cuts the worm wheel creating a complete radius at the base of the tooth to improve fatigue resistance and to ensure smooth and regular operation, resulting in longer durability.

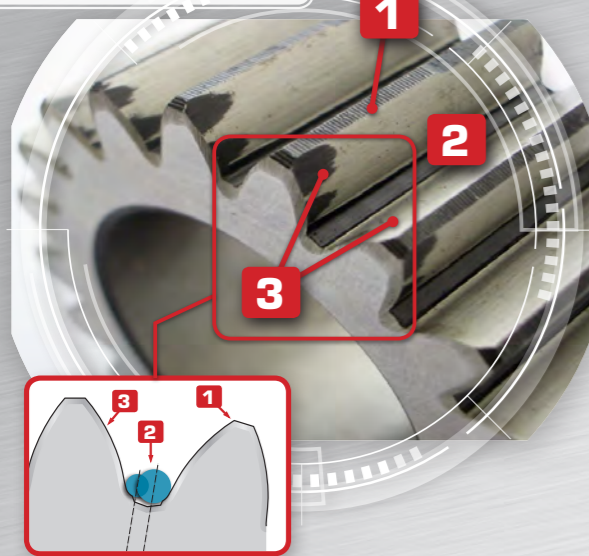
CHOOSE ANY GROUND, DO NOT CHOOSE JUST ANY GEAR.



EURORICAMBI SPA
 Via Chiesaccia, 5 - Loc. Crespellano
 40053 Valsamoggia - Bologna - Italy
 Ph.: +39 051 6506811
 Fax.: +39 051 6506812
euroricambi@euroricambi.com
www.euroricambi.com

(*) Each item marked as "NON-OEM product" may come from a variety of non-original manufacturers. All original equipment manufacturer's names, numbers, symbols, descriptions, photographic images and digital copy of photographic images are used for reference purposes only.

NON-OEM product (*)



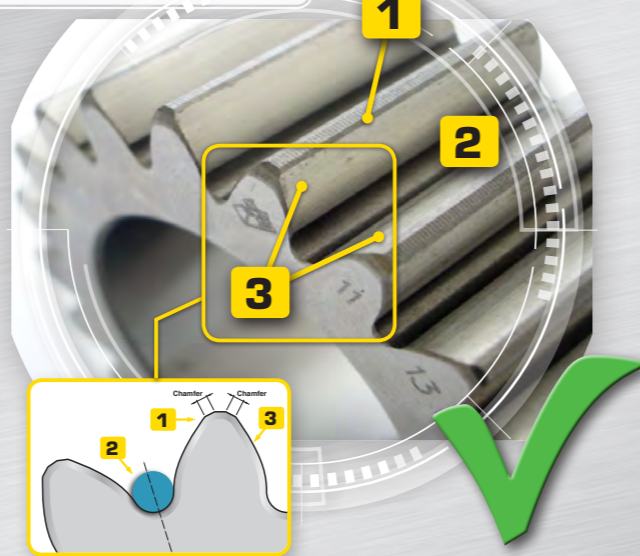
1 SEMI-TOPPING:

EURORICAMBI uses toolings generating a chamfer on the tooth tip (semi-topping). This prevents dents to facilitate quieter operation.

2 TOOTH BASE:

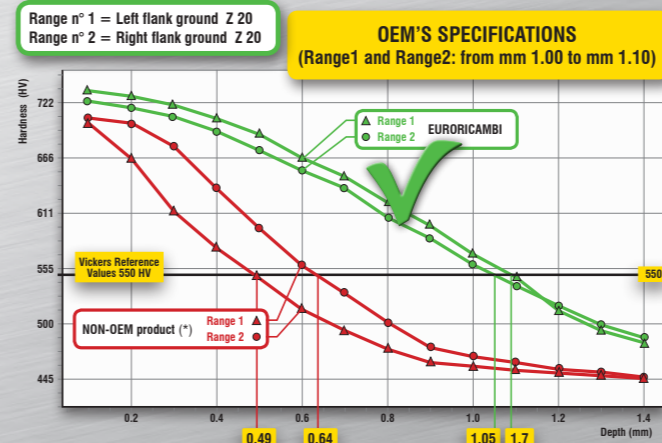
EURORICAMBI creates an even and complete radius with an undercut at the base of the tooth. This ensures greater resistance to fatigue failure by preventing breakage when meshing.

EURORICAMBI



3 FLANK GRINDING:

In order to remove heat treatment distortions and to achieve a perfect geometry on tooth profiles and flanks, EURORICAMBI performs tooth grinding in compliance with DIN 7 quality. Highly sophisticated machines automatically detect the tooth slot and remove the grinding stock in equal parts on tooth flanks, ensuring constant case depth and perfect concentricity. In this way quieter operation and longer life are granted to the gear wheel.



EURORICAMBI product is distinguished by the following two features:

- 1 - Effective case depth double that of NON-OEM product (*) to assure a longer life to the planetary gear.
- 2 - Uniform stock removal: the teeth grinding process grants a constant case depth on all teeth.

NON-OEM product (*):

- 1 - Low effective case depth, half of OEM's and EURORICAMBI's ones.
- 2 - Uneven stock removal: excessive heat treatment distortion leads to uneven case after teeth grinding.

NON-OEM product (*)

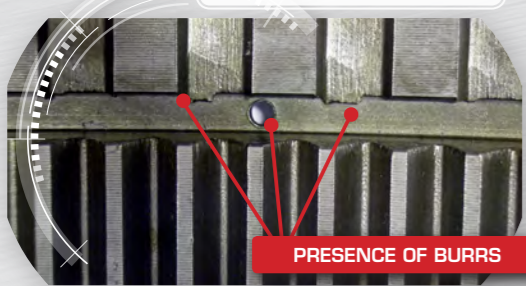


EURORICAMBI

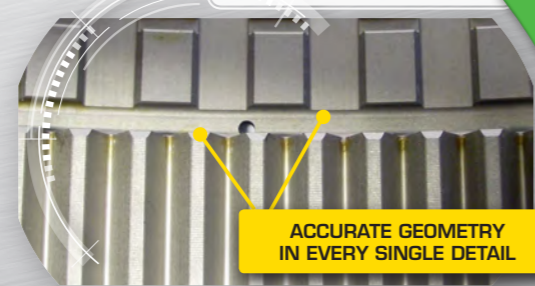


EURORICAMBI uses case hardening steel in conformity with UNI EN 10084 standard which provides greater mechanical resistance and longer durability. EURORICAMBI manufactures bushings in tin bronze conforming to UNI 7013 and not in cast iron or in sintered bronze, like some NON-OEM product (*)

NON-OEM product (*)



EURORICAMBI



NON-OEM product (*)



EURORICAMBI



EURORICAMBI



EURORICAMBI uses a higher performing steel (42CrMo4) having better mechanical strength and better hardenability.

The core hardness depends on the type of material and heat treatment applied. The material used by EURORICAMBI (42CrMo4), is much better than C45 of NON-OEM product (*) and grants high strength and fatigue life.

The induction hardening depth is three times more and ensures high resistance to fatigue and wear.

	Material	Surface Hardness	Core Hardness (R)	Induction hardening depth on the teeth
EURORICAMBI	42CrMo4 ✓	HRC 56 - 58	87 - 88 Kg/mm ² ✓	9 mm ✓
NON-OEM product (*)	C45	HRC 54 - 56	73 Kg/mm ²	2,7 mm

(*) Each item marked as "NON-OEM product" may come from a variety of non-original manufacturers. All original equipment manufacturer's names, numbers, symbols, descriptions, photographic images and digital copy of photographic images are used for reference purposes only.